

# KLODEN

The background of the entire page is a photograph of a building at night, likely a theater or event space. The building has a dark facade with some lit-up windows and a large glass entrance. Overlaid on this image are numerous semi-transparent, colorful circles in shades of pink, blue, yellow, and orange, creating a bokeh effect. Some of these circles are large and prominent, while others are smaller and more numerous, scattered across the top and bottom of the image. The overall mood is festive and modern.

TEATER

VENUE & TECHNICAL INFO

TECE

Last updated 07. Nov 22

Stage address:	Kabelgata 31 0581 Oslo
Administration address:	Kabelgata 19 0581 Oslo
Contact, Technical Manager:	Anders Borchgrevink anders@kloden.no +47 93 61 80 98
Contact, Production Manager:	Mari Haugen mari@kloden.no +47 91 51 56 37
Venue type:	Blackbox, with 5 row amfi
Capacity:	60 seats in amfi (Chairs may be added) 120 (Max. capacity in venue)
Load-in:	Street level easy entrance. 5 meters from door to stage. No stairs.
Parking:	By appointment due to limited availability
Stage:	11 x 11 meters Black walls and fabric Black wooden floor
Rig:	Motorized square truss 10 x 8 meter Max height 5,7 meters Fabric on permanent seperate bars (See drawings for further information)

Power:	2 x 32a 230V 3 phase 3 x 16a 1 phase (located upstage left)
Storage:	Limited
Fire alarm:	The stage has connected fire alarms. Can be disabled in order to use haze and smoke effects. To be agreed with technical manager.
Access:	Unloc key app. Contact prodution manager for access.
Dressing rooms/backstage:	2 rooms Sink Fridge Seperate room with shower
Kitchen:	Small kitchen with coffee maker and dish washer. Used as bar / cafe during shows. Located in the entrance area
Accessibility:	Good. Easy access, no stairs.
Internet/wifi:	Username: Norsk Scenekunst Gjest Password: VelkommentilScenekunst
Public transportation:	Subway number 4 or 5 to Økern or Risløkka Bus number 23 or 24 to Ulven torg Bus number 28, 345, 60 og 67 to Økern Bus number 58 to Knud Bryns vei
Accommodation:	Quality Hotel 33 (nearest hotel) Radisson RED Quality Hotel Hasle Linie
Tickets:	<a href="https://kloden.ticketco.events/no/en">https://kloden.ticketco.events/no/en</a>

## POWER

Yamaha TF1 digital mixer 16 in/out	x 1
Yamaha DXS 12 top	x 2
Yamaha DXS18 sub	x 2
DAD Touring 12AG2 active speaker (monitor/fill)	x 2
JTS UF-20R 2 channel wireless system (6 channels in total)	x 3
JTS Head mic	x 4
JTS Handheld mic	x 2
ARX Pro DI box	x 2
Multicable with 12 sends, 4 returns	x 1

## LIGHT

Prolights Stark400 Wash movingheads	x 4
BT-Theatre 100EC Fresnell 100W 3200K LED	x 6
Prolights Eclipse FS Zoomprofile 200W RGBW 25-50°	x 8
Prolights VERSAPAR LED COB RGBWA with motorised ZOOM 10-60°	x 8
BT-Theatre 250 EZ LED Fresnell 250W White with motorised ZOOM	x 8
Prolights Lumipar 12 Hp Pro Hd RGBWA+UV	x 8

## SMOKE / HAZE

Antari F-1 Fazer (Combined smoke and haze machine)

## LIGHT DESK

Grand MA3 Command wing with PC

## CABLES

All necessary cables for our equipment  
Some extra DMX (5pin), xlr and power

## RIG

8 meter deep, 10 meter wide truss grid  
(See drawings for further information)

## RIG EQUIPMENT

### A-ladder

Sidelight stand made of:

50mm pipes 1,60m x 10

50mm pipes 1,50m x 8

Kee Klamps:

90 degree clamp x 4

T-clamp x 6

Wooden baseplate x 10

Pipes

6 meters x 5

3,5 meters x 2

2 meters x 1

Swivles x 17

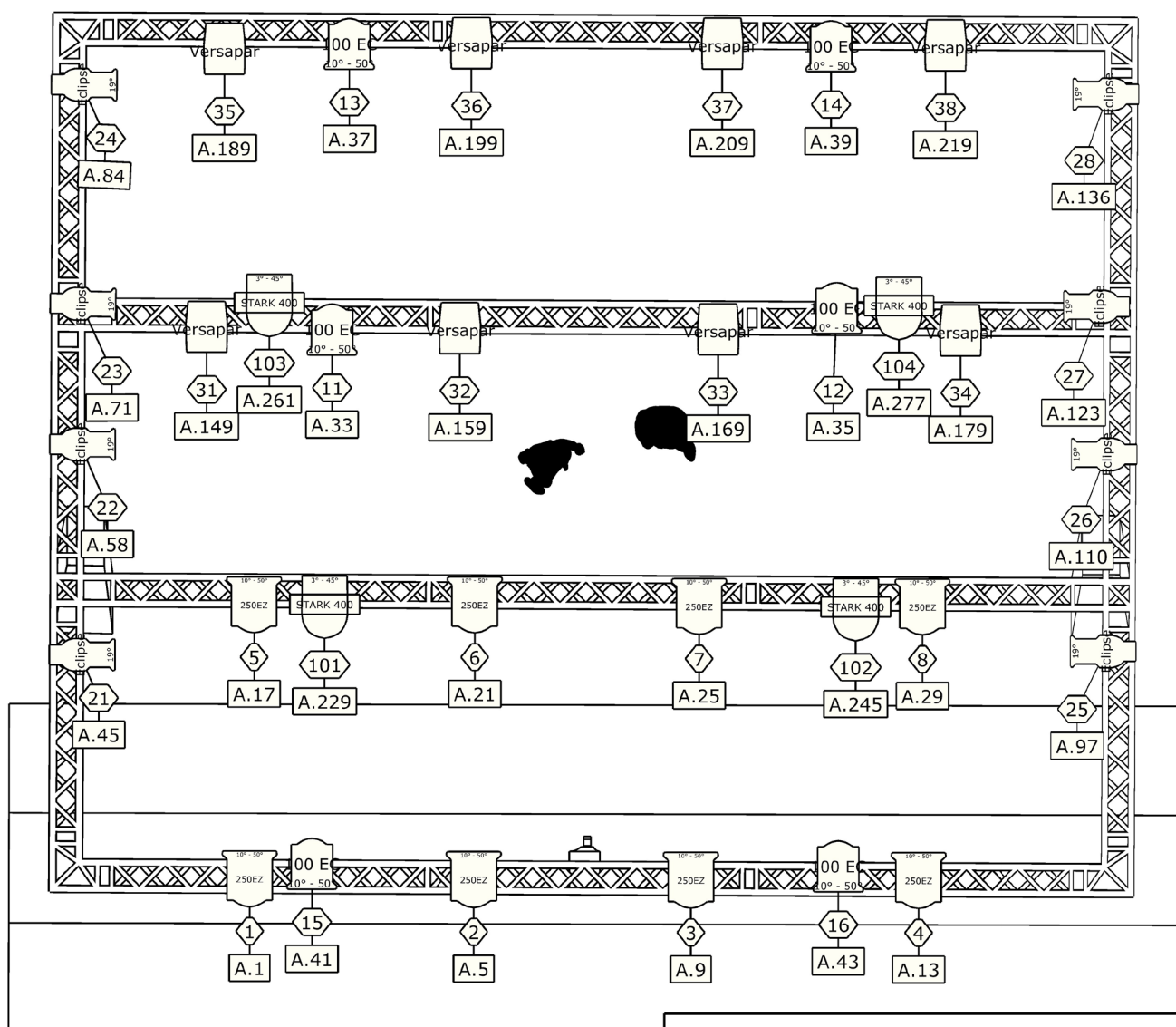
## NON TECHNICAL EQUIPMENT

Brown chairs without armrest x 30

Misc colored chairs without armrest x 22

Round tables x 10



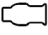


Misc tools, measure and drill



Project <b>Grunnrigg</b>	
Project location <b>PILOT</b>	Project date <b>011821</b>
Client <b>KLODEN Scene</b>	
Drawing author <b>Yasin Gyltepe</b>	Drawing version <b>5.0</b>

# KLODEN

## Symbol key

-  Prolights VERSAPAR RGBWA m ZOOM 10CH (8)
-  BT-Theatre 250EZ Fresnell 4ch (8)
-  Prolights ECLIPSEFS Zoomprofil 20-50 13ch (8)
-  BT-Theatre 100EC Fresnell 2ch (6)
-  Prolights STARK400 Wash Mode 16ch (4)

